

A stack of papers is visible in the background of the top-left quadrant, which has a light purple background. The papers are slightly blurred and appear to be stacked on top of each other.

Impact of Proposal and Award Management Mechanisms (IPAMM) Working Group

An analog clock is visible in the background of the bottom-right quadrant, which has a yellow background. The clock face is white with black numbers and hands, and it is slightly faded.

Discussions with
the Advisory Committees



IPAMM Working Group

- Charge:
 - Identify best practices to achieve an appropriate balance between proposal success rates, award sizes and award duration
 - Emphasis on individual, investigator-initiated grants.
- Members from across NSF: EHR, R&RAs, OISE, OPP, and BFA
 - Program Directors and Division Directors
 - Rotators and Permanent Staff

What Is the Issue?

- Success rate for research proposals was 20% in FY05, down from 30% in FY00
- Potential impact on merit review
 - Increased workload on reviewer community
 - Increased workload on NSF staff
- Potential loss of capacity



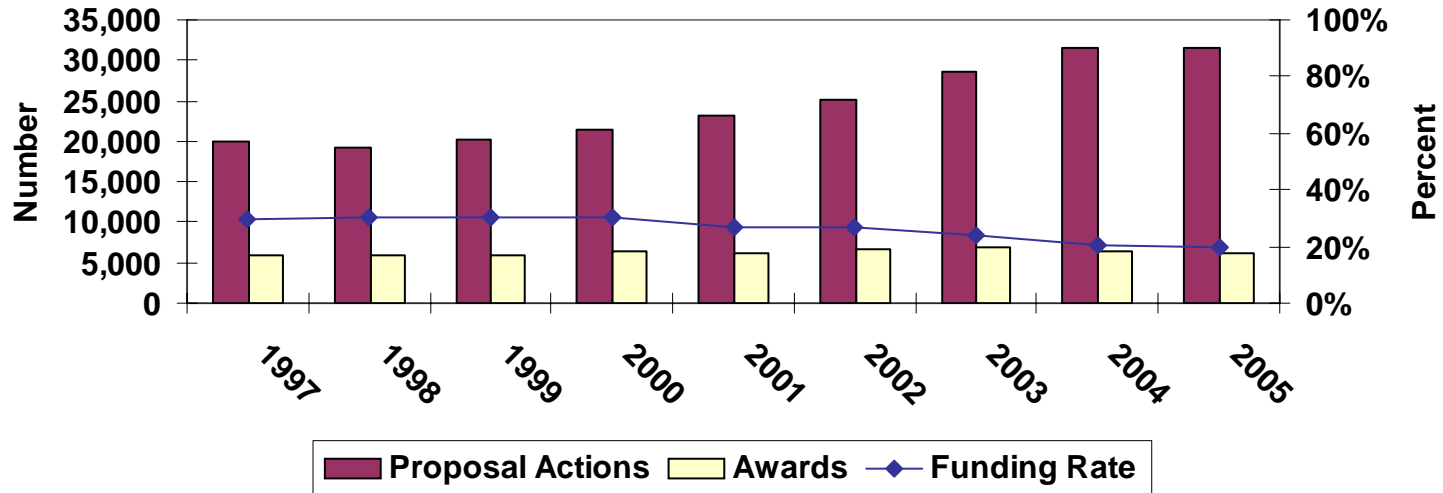
What is the likelihood that a given proposal will be funded?

- Research proposal success rates dropped from 30% in FY 2000 to 20% in FY 2005, leveled off in FY 2006 (21%)
- Coincided with:
 - 47% increase in proposal submissions (began in FY 2000, peaked in FY 2004, leveled off in FY 2005 and 2006)
 - 41% increase in average award size
 - 39% increase in median award size
- Research proposal success rates varied across the R&RA directorates, however all experienced declines

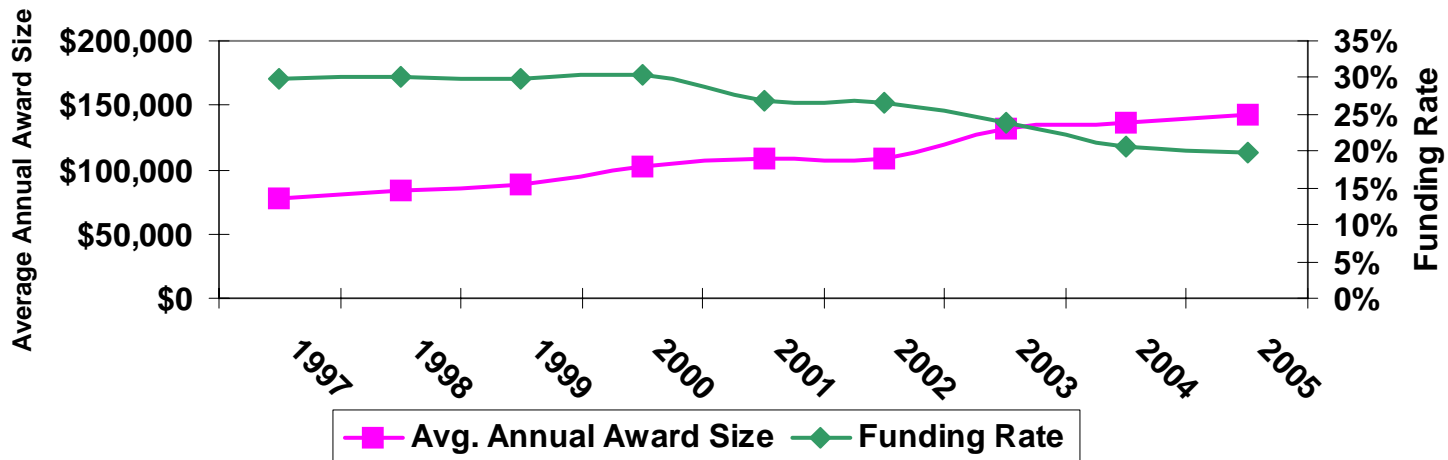


Decrease in proposal success rates coincides with increases in proposal submissions and average award size/duration

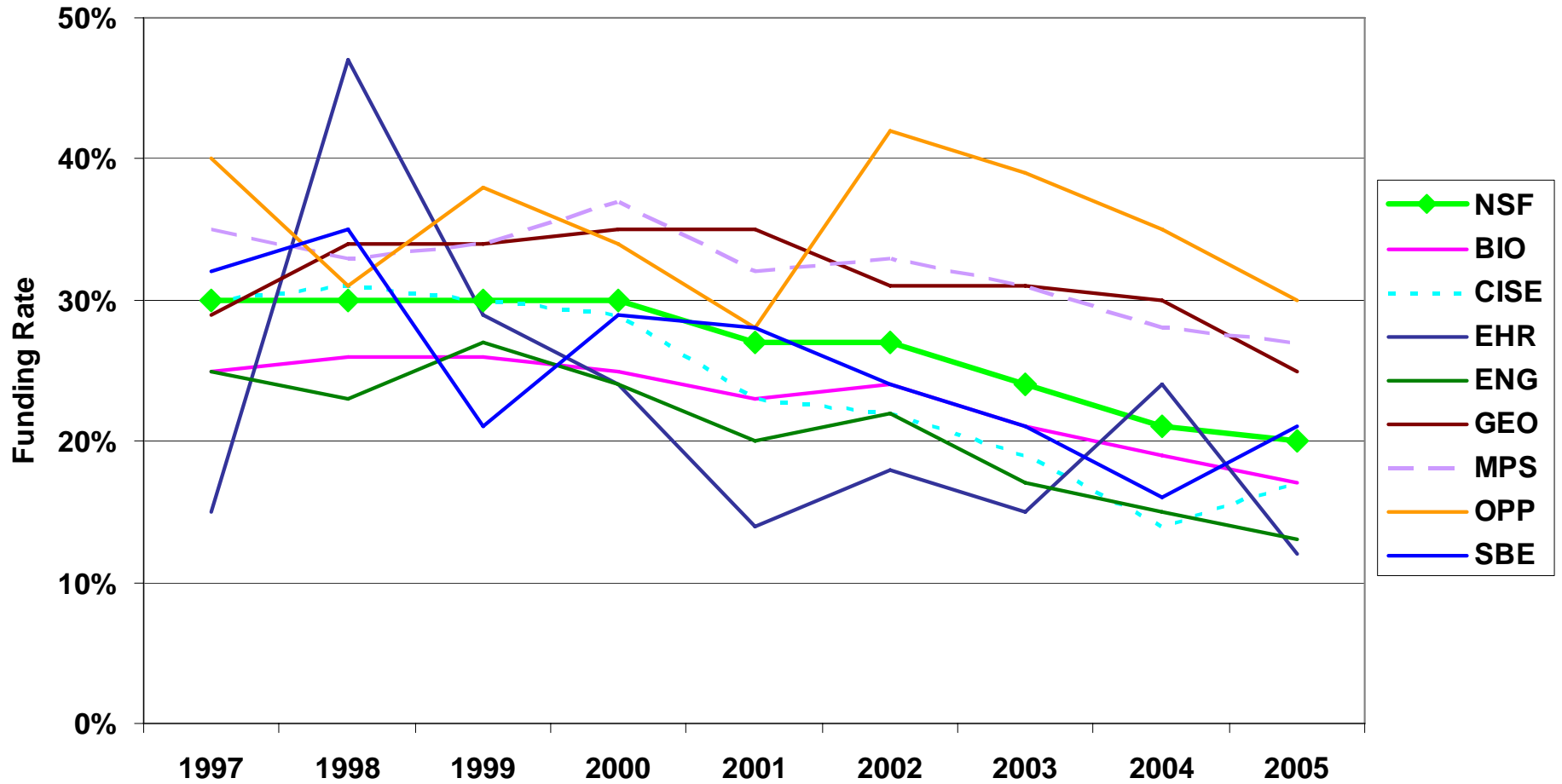
NSF Funding Rate for Competitive Research Grants



NSF Average Annual Award Size vs. Funding Rate for Competitive Research Grants



Funding Rate for Competitive Research Grants



Observations

- # of PIs submitting to NSF increased from FY 2000-2005
 - 29% increase in first-time submitters
 - 38% increase overall
- 30% increase in # proposals PIs submit to gain a single award
 - 1998-2000: 1.7 per PI
 - 2003-2005: 2.2 per PI



Potential Drivers Affecting Proposal Submissions

- Increased use of solicitations with specific research foci
- Limits on submissions in specific cases
- Congress authorizes doubling the NSF budget (2002, 2007?)
- NSF budgets decrease or are flat (2004-2005)
- NSB calls for increased award size and duration
- Potential effect of PI fatigue





Next steps

- Case studies of various practices related to proposal submissions
- Additional data analyses
- Obtain external input
 - Focus groups with new rotators
 - Applicant Survey to assess external drivers
 - **Visits with Advisory Committees**